



Bavaria: Statistics 2021



Publication service

The Bavarian State Office for Statistics issues more than 400 publications annually. The current list of publications is available on the Internet as a file but can also be provided free of charge in printed form.

Free of charge

is the download of most publications, e.g. statistical reports (PDF or Excel format).

Subject to charge

are all print versions (also of statistical reports), data carriers and selected files (e.g. of directories, of contributions, of the yearbook).

Explanation of symbols

- 0 less than half of 1 in the last digit occupied, but more than zero
- no figures or magnitude zero
- / no data because the numerical value is not sufficiently reliable
- numerical value unknown or not to be disclosed
- ... data will be available later
- x cell blocked for logical reasons
- () limited informational value because the numerical value is of limited statistical reliability
- p provisional numerical value
- r corrected numerical value
- s estimated numerical value
- D average
- △ corresponds to

Publication service



All publications are available on the Internet at www.statistik.bayern.de/produkte

Rounding

In general totals have been rounded and therefore may not sum. As a result minor deviations from the reported totals may occur when individual figures are added up. When totals are shown as a percentage, the sum of the individual figures may not be 100% due to rounding. In general the sum of percentages is not made to be 100%.

Abbreviations

€	euro
EU	European Union
ALC	association of local councils
ha	hectare (10,000 m ²)
hl	hectolitres (100 litres)
mill.	million
%	percent
km ²	square kilometre
m ²	square metre
pcs.	piece
TJ	10 ¹² Joules
t	tonne

About us

Bavaria: Statistics 2021

Essential Bavarian structural data from the economy, society and politics at your fingertips.

Publication frequency: annually

Deadline for publication: 29 October 2021

Office in charge of publishing, printing and distribution

Bayerisches Landesamt für Statistik
Nürnberger Straße 95
90762 Fürth

Picture credits

Bayerisches Landesamt für Statistik

Paper

Printed on environmentally friendly paper bleached without chlorine

Please note: This publication is part of the public relations activities of the Bavarian Government. It may not be used by political parties, electoral canvassers or counting assistants for the purpose of election campaigning during the period of five months prior to an election. This applies to state, national, local and European elections. During this time its distribution at electoral events, at party information stands and inserting, printing and affixing party political information or advertising material is strictly prohibited. It is also illegal to pass on such information to third parties for the purpose of electoral canvassing. Even if there is no forthcoming election, the publication may not be used in ways that could be interpreted as the state government favouring individual political groups. Parties are allowed to use the publication to inform their own members.

Order number

Z21011 202100

Price

Single issue free of charge (plus delivery charges)
PDF-file free of charge

Distribution

E-mail vertrieb@statistik.bayern.de
Phone +49 911 98208-6311
Fax +49 911 98208-6638

Information service

E-mail info@statistik.bayern.de
Phone +49 911 98208-6563
Fax +49 911 98208-6573

© Bayerisches Landesamt für Statistik, Fürth 2021

Reproduction and distribution, also partially, is permitted provided the source is named.

Table of contents

Map of the Free State of Bavaria	5
Area and population	6
Chart Age structure of the population by sex on 31 December 2020	7
Population dynamics	8
Charts Live births and deaths since 1952	9
Marriages and divorces since 1952	9
Naturalisations 2020 by age	9
Naturalisations 2020 by duration of residence	9
Public healthcare	10
Charts Beds set up in general hospitals since 2000	11
Doctors in private practice since 2000	11
Mortality 2019 by selected causes of death	11
Education and culture	12
Charts Childcare and schoolchildren since 2010/11	13
Students at Berufsschulen and in high education since 2010/11	13
Administration of justice	12
Chart Convicted people since 2000	13
Employment	14
Charts People in work 1970, 1987 and 2019 by occupational status	15
Unemployed people and registered jobs since 1996	15
Unemployment rate since 1996	15
Agriculture and forestry	16
Charts Structure of agricultural holdings 1999, 2010 and 2020 by size classes of the agricultural area used	17
Livestock 2007, 2010, 2013 and 2020	17
Agricultural area used 2020	17
Manufacturing industry	18
Charts New orders for manufacturing 2019 and 2020	19
Manufacturing, mining and quarrying 2019 and 2020	19
Turnover and people employed in construction 2019 and 2020	19
Construction and housing	20
Charts Building permits for dwellings in administrative districts 2020	21
Flats completed since 1976	21
Total of residential buildings and dwellings since 1950	21
Trade and hospitality	22
Charts Imports and exports 2020 by major countries	23
External trade developments since 1996	23
Guest arrivals and overnight stays in tourist accommodation and campsites 2020 by country of origin of guests	23

Traffic	24
Charts Number of motor vehicles since 1980	25
Number of road accidents since 1980	25
Money and lending	24
Chart Insolvency proceedings initiated 2006 to 2020	25
Social services	26
Charts Severely disabled people on 31 December 2019 by degree of disability	27
Places available and people in need of care in nursing homes	
on 15 December 2019 by administrative districts and levels of care	27
Number of nursing homes	27
Public finances	28
Chart Tax revenue of state and local councils 2020	29
Wages and salaries (earnings)	28
Chart Average gross monthly earnings of full-time employees	
since the first quarter of 2013	29
Prices	30
Charts Consumer price index since 2001:	
Development by selected product groups	31
Change relative to previous year or month of previous year	31
National accounts	32
Charts Growth rates of real gross domestic product in Bavaria and Germany	
since 1955	33
Economic structure in 2020	33
Map of the Federal Republic of Germany	34

Free State of Bavaria including administrative districts, independent cities and counties

Territorial status: 31 December 2020



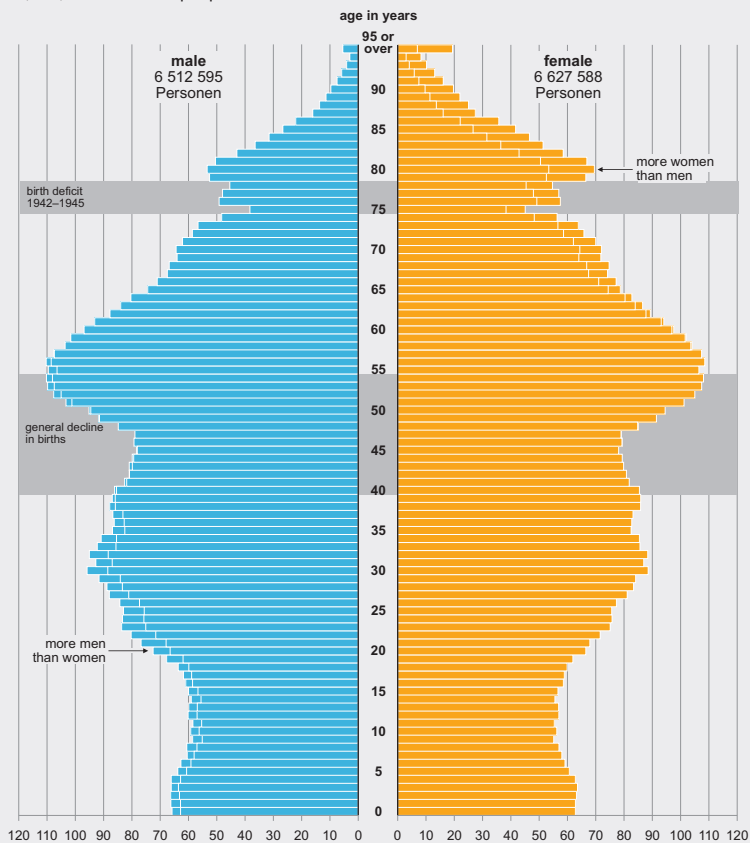
Area and population	Unit	2000	2010	2020
Area on 31 December	km ²	70,548	70,550	70,542
Population on 31 December	quantity	12,230,255	12,538,696	13,140,183
of which male	quantity	5,974,283	6,158,439	6,512,595
of which married ¹	quantity	5,474,486	5,183,925	5,722,509
of which aged				
under 6 years	%	6.2	5.1	5.9
6 to under 15 years	%	10.1	8.7	8.0
15 to under 18 years	%	3.2	3.2	2.7
18 to under 25 years	%	7.8	8.4	7.7
25 to under 30 years	%	6.2	6.1	6.4
30 to under 40 years	%	17.3	12.4	13.4
40 to under 50 years	%	14.4	17.0	12.5
50 to under 65 years	%	18.6	19.5	22.8
65 years or over	%	16.2	19.5	20.7
including foreigners	1,000	1,132	1,191	1,805
Population per km ²	quantity	173	178	186
Private households ²	1,000	5,521	6,065	...
of which one-person households	1,000	1,946	2,412	...
multi-person households	1,000	3,575	3,653	...
of which 2 people	1,000	1,759	1,956	...
3 or more people	1,000	1,816	1,697	...
Average household size	people	2.2	2.1	...

1 2020 including people in civil partnership.

2 Results of the microcensus.

Age structure of the population on 31 December 2020 by sex in thousands

13,140,183 number of people in total



1880



1925



1950



1980



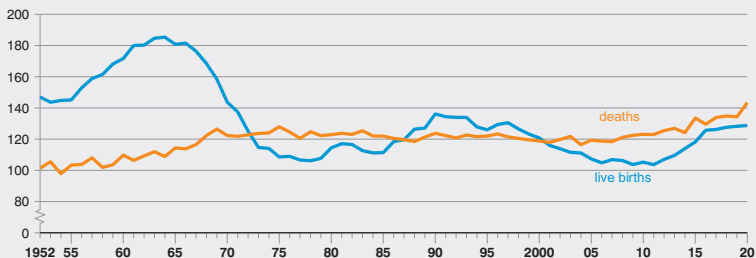
Population dynamics	Unit	2000	2010	2020
Marriages ³	quantity	63,038	59,092	61,138
Marriages per 1,000 inhabitants	quantity	5.2	4.7	4.7
Divorces ⁴	quantity	27,250	26,807	21,484
Divorces per 1,000 inhabitants	quantity	2.2	2.1	1.6
Live births	quantity	120,765	105,251	128,764
Live births per 1,000 inhabitants	quantity	9.9	8.4	9.8
Deaths	quantity	118,846	123,089	143,367
Deaths per 1,000 inhabitants	quantity	9.8	9.8	10.9
Surplus of births or deaths respectively (-)	quantity	1,919	-17,838	-14,603
Immigration across the state border	quantity	289,307	258,314	323,001
Emigration across the state border	quantity	215,938	212,699	289,763
Immigration surplus	quantity	73,369	45,615	33,238
Naturalisations	quantity	20,622	12,021	20,192

3 2020 including same sex marriages.

4 2020 including same sex divorces.

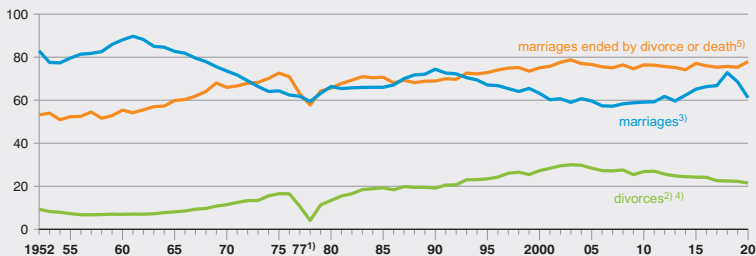
Live births and deaths since 1952

in thousands



Marriages and divorces since 1952

in thousands



¹⁾ Year of the marriage law reform.

²⁾ In connection with the complete revision of the order on the collection of statistical data in family matters as of 1 September 2009 in the course of the Voluntary Jurisdiction Reform Act and the conversion of the branch office automation system at the reporting offices, the divorce statistics of 2009 in Bavaria are expected to show an under-recording of an estimated 1,900 cases.

³⁾ From the 2018 reporting year including same sex marriages and from the 2019 reporting year including marriages of people of diverse sex.

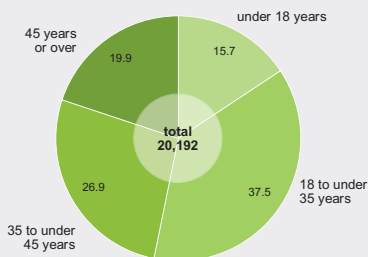
⁴⁾ 2019 including same sex divorces.

⁵⁾ Excluding marriages dissolved by annulment of a void marriage or a voidable marriage.

Naturalisations 2020

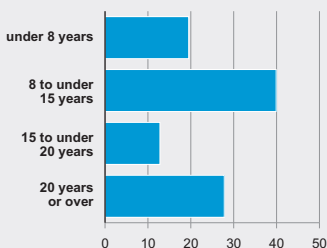
by age

in percent



by duration of stay

in percent



Public healthcare	Unit	2000	2010	2020
Professional doctors in private practice on 31 December ⁵	quantity	21,417	24,478	28,263
Professional dentists in private practice on 31 December ⁶	quantity	8,323	9,924	11,642
Public pharmacies on 31 December	quantity	3,431	3,430	3,020
Hospitals on 31 December	quantity	406	373	...
hospital beds ⁷	quantity	83,484	75,789	...
full-time doctors ⁸	quantity	16,740	22,747	...
nurses	quantity	61,836	62,171	...
Deaths caused by ... per 100,000 inhabitants				
Diseases of the circulatory system in total ⁹	quantity	467.0	412.1	...
Malignant neoplasms	quantity	243.6	244.1	...
Diseases of the respiratory system	quantity	59.4	67.4	...
Diseases of the digestive system	quantity	45.7	49.9	...
Accidents of all kinds	quantity	24.9	18.2	...
Suicide	quantity	16.1	14.1	...

5 Figures of the Bayerische Landesärztekammer (Bavarian State Medical Association) from 2000.

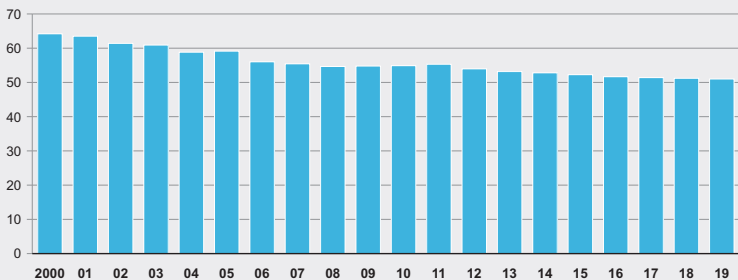
6 Figures of the Bayerische Landeszahnärztekammer (Bavarian State Dental Association) from 2000; these membership statistics have been revised and may therefore differ from previous publications.

7 Annual average in each case.

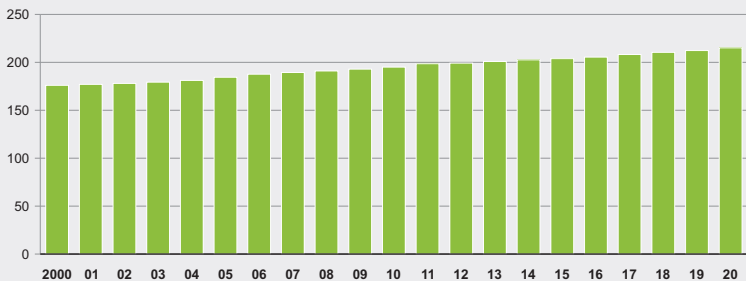
8 Including dentists.

9 Due to the revision of the classification of causes of death the definition of these items has changed several times.

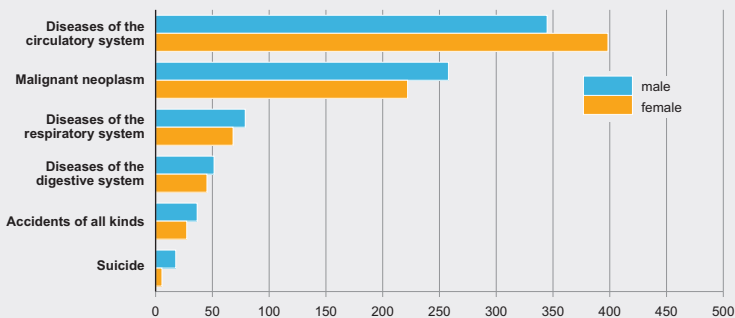
Beds set up in general hospitals since 2000 per 10,000 inhabitants



Doctors in private practice since 2000 per 100,000 inhabitants



Mortality 2019 by selected causes of death Deaths per 100,000 inhabitants of one sex



Education and culture		Unit	2000	2010	2020
Volksschulen ¹⁰ on 1 October	schools	quantity	2,858	3,166	3,289
	schoolchildren	quantity	858,128	665,334	636,972
	teaching staff	quantity	48,088	44,185	44,550
Realschulen ¹¹ on 1 October	schools	quantity	335	368	379
	schoolchildren	quantity	166,902	242,516	214,286
	teaching staff	quantity	10,194	14,271	15,605
Gymnasien ¹² on 1 October	schools	quantity	400	413	433
	schoolchildren	quantity	322,056	387,761	314,712
	teaching staff	quantity	21,779	26,367	25,382
Berufsschulen ¹³ on 20 October	schools	quantity	235	228	228
	schoolchildren	quantity	298,008	285,106	257,388
	teaching staff	quantity	8,195	8,068	8,788
Total number of students in higher education ¹⁴		quantity	213,301	287,432	404,705
of which universities		quantity	150,814	189,270	250,398
art colleges		quantity	3,046	3,299	3,675
universities of applied sciences (including universities of administrative sciences)		quantity	58,788	94,277	150,063

10 Schools including years 1–9 (from 2012 primary schools and schools including years 5–9 or 5–10 but excluding Gymnasien)

11 Secondary schools including years 5–10 (excluding Gymnasien). Including Realschulen for special educational needs.

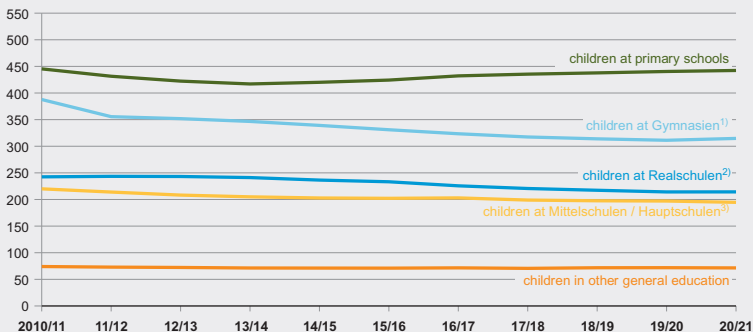
12 Grammar schools (years 5–13)

13 Vocational schools. Up to and including 2002 data as of 15 October; including Berufsschulen for special educational needs.

14 In the winter semester; including double enrolment.

Administration of justice		Unit	2000	2010	2020
Total number of final convictions		quantity	145,903	125,229	116 980
of which adults		quantity	120,749	102,980	103 383
young people aged 18–20		quantity	15,529	12,831	8 694
young people aged 14–17		quantity	9,625	9,418	4 903
of which convictions for road traffic offences		quantity	43,798	29,801	29 145
convictions excluding road traffic offences		quantity	102,105	95,428	87 835

Childcare and schoolchildren since 2010/11 in thousands

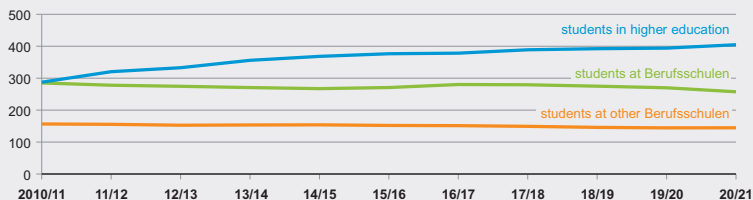


¹⁾ Grammar schools (years 5–13).

²⁾ Secondary schools (years 5–10 excluding grammar schools).

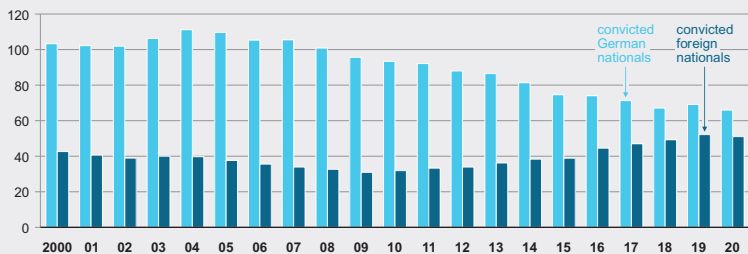
³⁾ Secondary schools (years 5–9 or 5–10 excluding grammar schools).

Students at Berufsschulen* and in higher education since 2010/11 in thousands



* Vocational schools.

Convicted people since 2000 in thousands



Employment	Unit	2000	2010	2020
Total of people in work ¹⁵	1,000	5,879	6,358	...
of which male	1,000	3,308	3,452	...
female	1,000	2,571	2,906	...
of which aged				
under 25 years	%	12.7	11.8	...
25 to under 40 years	%	39.7	31.0	...
40 to under 65 years	%	46.2	55.0	...
65 years or over	%	1.4	2.2	...
By professional status				
Self-employed	1,000	682	769	...
Unpaid family workers	1,000	100	72	...
Employees	1,000	5,097	5,518	...
Activity rate ¹⁶				
total	%	50.9	53.1	...
male	%	58.5	58.8	...
female	%	43.7	47.7	...
Foreign workers in employment ¹⁷	1,000	344	363	892
Unemployed people ¹⁸	quantity	339,537	299,448	275,075
Unemployment rate ^{18,19}	%	6.3	4.5	3.6
Total of jobs registered ¹⁸	quantity	89,588	50,333	100,066
People on a job retention scheme ¹⁸	quantity	7,146	89,750	545,717

15 Results of the microcensus.

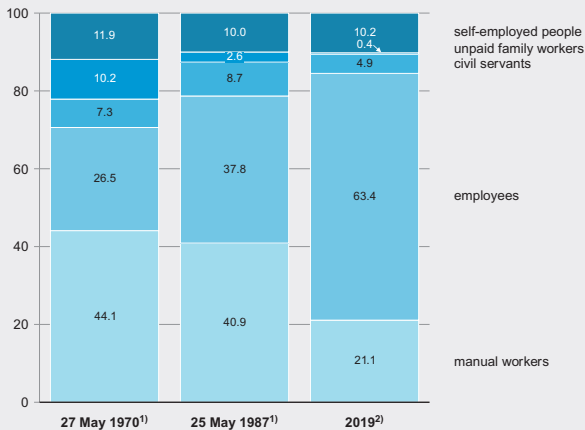
16 Proportion of all economically active people within the total population.

17 Employees subject to social insurance contributions on 30 June.

18 Annual average in each case.

19 Unemployed people as a percentage of the employed civilian labour force or, from 2003, as a percentage of all civilian labour force.

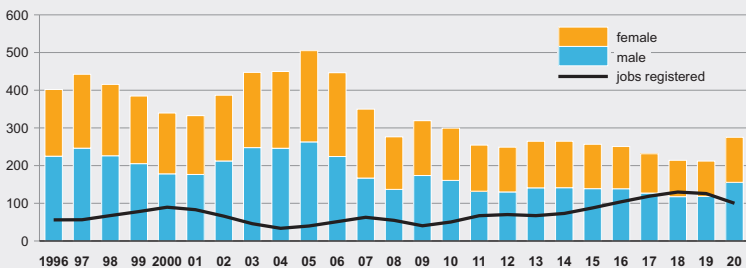
People in work 1970, 1987 and 2019 by occupational status in percent



1) Census.

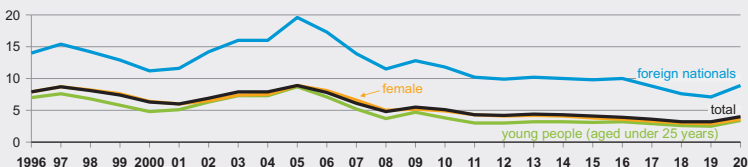
2) Microcensus, people in work excluding people in training.

Unemployed people and jobs registered since 1996* in thousands



* Annual averages.

Unemployment rate since 1996* in percent



* Annual averages; percentage of unemployed people as compared with total of employed civilian labour force or as a percentage of the respective part of employed civilian labour force.

Agriculture and forestry	Unit	2000	2010	2020
Agricultural holdings with an agricultural area used (AAU) of 2 ha minimum; from 2010: all agricultural holdings including an AAU of	quantity	149,057 1	97,735	84,217
2 to under 5 ha/ from 2010 under 5 ha	quantity	23,112	4,035	2,553
5 to under 10 ha	quantity	29,684	17,435	15,789
10 to under 20 ha	quantity	38,317	27,334	22,120
20 to under 50 ha	quantity	44,918	30,968	24,224
50 to under 100 ha	quantity	11,050	13,906	13,977
100 ha or over	quantity	1,976	4,057	5,554
Agricultural area used total	1,000 ha	3,279	3,137	3,108
of which permanent pasture	1,000 ha	1,169	1,071	1,071
arable land	1,000 ha	2,092	2,052	2,023
including cornfields	1,000 ha	1,216	1,168	1,058
Crop harvest (with grain maize and Corn-Cob-Mix)	1,000 t	7,667	7,274	7,964
Potato harvest	1,000 t	2,417	1,648	1,911
Sugar beet harvest	1,000 t	5,183	4,253	5,308
Vegetable harvest	1,000 t	373	487	611
Fruit harvest in commercial fruit production (tree fruit only)	1,000 t	49	38	47
Grape must harvest	1,000 hl	480	354	268
Livestock of cattle (3 May 2000, 1 March 2010)	1,000	3,977	3,356	2,963
including dairy cows	1,000	1,416	1,244	1,118
Pigs	1,000	3,731	3,654	3,070
Sheep	1,000	479	388	313
Cow's milk production ²⁰	1,000 t	7,650	7,759	8,233
Total slaughter quantity ²¹	1,000 t	868	847	773
of which beef (excluding veal)	1,000 t	366	314	314
pork	1,000 t	493	528	455
Poultry meat ²²	1,000 t	63	138	191
Production of table eggs ²³	mill. pcs.	921	844	1,077

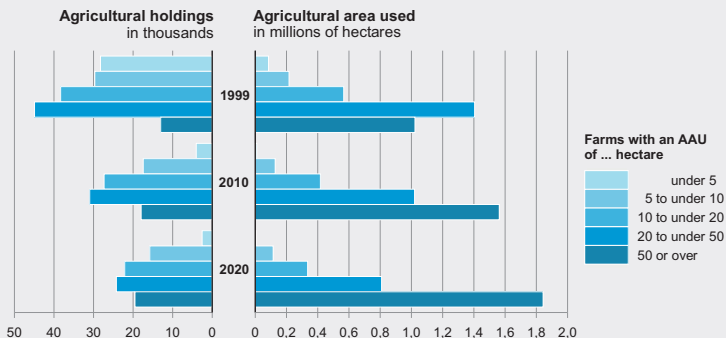
20 From 2010 figures of the Federal Agency for Agriculture and Food. 2010 cow, goat, sheep and buffalo milk.

21 Meat production from commercial slaughtering (excluding poultry meat) of animals of domestic and foreign origin.

22 From 2010 figures of the Federal Statistical Office; all poultry slaughterhouses with approval in accordance with EC hygiene legislation. Until 2009 poultry slaughterhouses with a slaughtering capacity of 2,000 animals minimum per month.

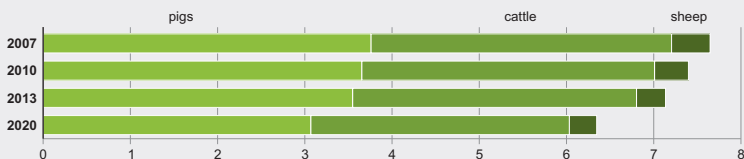
23 In companies with 3,000 places for hens minimum excluding poultry breeding and reproduction.

Structure of agricultural holdings 1999, 2010* und 2020* by size classes of agricultural area used (AAU)



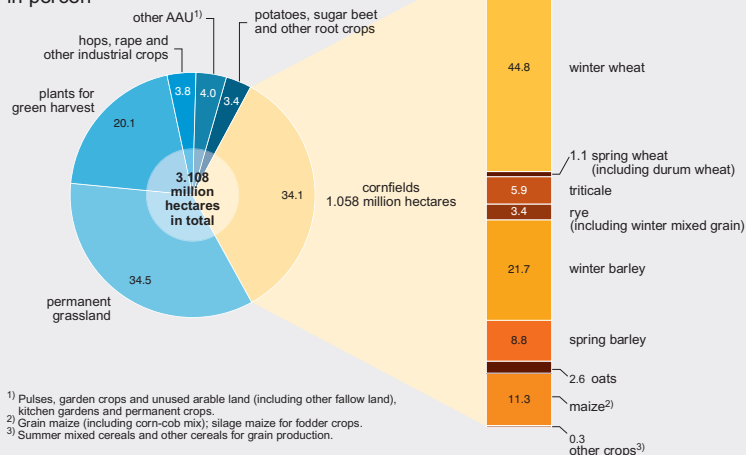
* From 2010 agricultural holdings will only be registered from 5 ha AAU or from other minimum units defined in the Agricultural Statistics Act (e.g. from 0.30 ha of special crops).

Livestock* 2007, 2010, 2013 und 2020 in millions of animals



* 2007 on 3 May; from 2010 on 1 March.

Agricultural area used (AAU) 2020 in percent

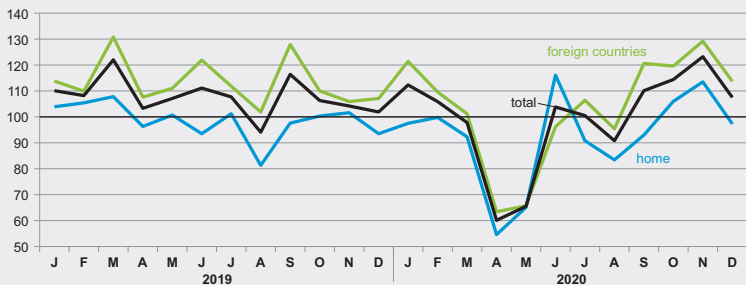


Manufacturing industry	Unit	2000	2010	2020
Manufacturing, mining and quarrying²⁴				
Companies	quantity	8,057	7,134	7,903
Total number of workers	quantity	1,207,466	1,138,089	1,299,507
including				
intermediate goods producers	quantity	x	395,391	459,996
capital goods producers	quantity	x	517,761	603,109
durable goods producers	quantity	x	41,955	42,438
consumer goods producers	quantity	x	181,099	192,108
Gross fees	mill. €	43,038	48,083	68,713
Total turnover (excluding VAT)	mill. €	246,619	309,984	348,781
including				
intermediate goods producers	mill. €	x	84,336	97,120
capital goods producers	mill. €	x	170,458	194,811
durable goods producers	mill. €	x	•	•
consumer goods producers	mill. €	x	36,130	42,383
including foreign sales	%	40.3	51.4	53.5
Construction industry (all companies)				
Companies end of June	quantity	15,408	13,446	13,516
People working at the end of June	quantity	180,788	128,541	168,849
Hours worked in June	1,000	18,868	14,519	17,558
Pay in June	mill. €	395	306	512
Construction turnover in the previous year (excluding VAT)	mill. €	17,475	15,491	26,480
Energy Industry				
Total of final energy consumption	TJ	1,371,207	1,404,879	...
including consumption of				
coals	TJ	24,852	16,807	...
petroleum products	TJ	732,527	618,889	...
gases	TJ	279,478	300,011	...
electricity	TJ	260,382	296,338	...
other energy sources	TJ	73,966	172,833	...

24 Mining and manufacturing (including craft industries) of enterprises with 20 or more workers. For companies, workers monthly average. From 2007 as of September. From 2009 according to Classification of Economic Activities 2008.

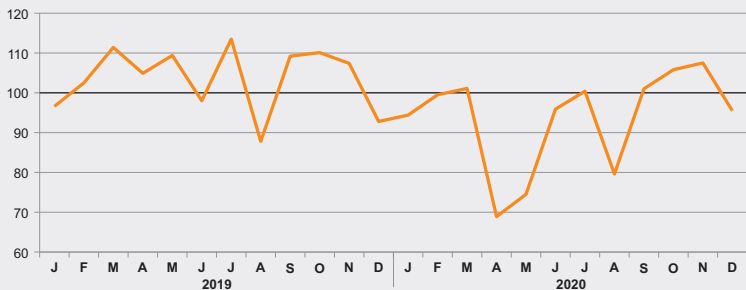
New orders for manufacturing in 2019 and 2020

Volume Index, 2015 = 100



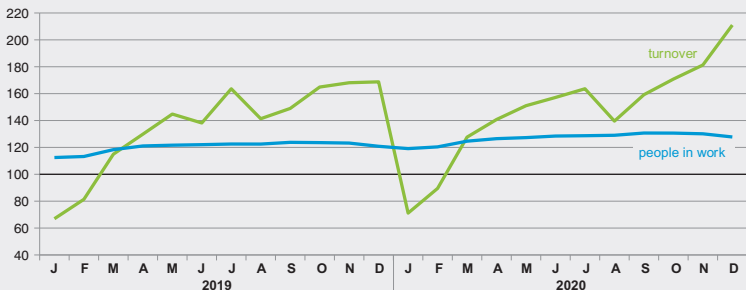
Manufacturing, mining and quarrying 2019 and 2020

Index by calendar month, 2015 = 100



Turnover* and people employed in construction in 2019 and 2020

monthly average, 2015 = 100



* Construction turnover; excluding VAT.

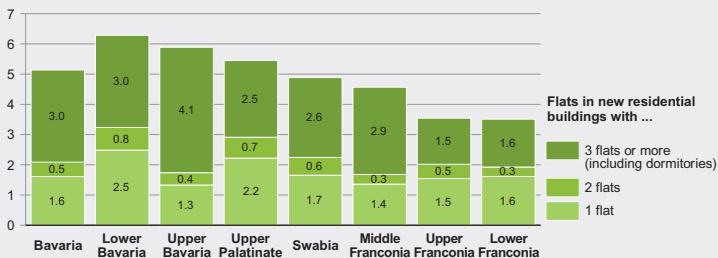
Construction and housing	Unit	2000	2010	2020
Residential buildings completed (new constructions) ²⁵	quantity	38,190	17,392	25,449
of which buildings with one flat	quantity	29,792	14,518	19,701
two flats	quantity	5,177	1,520	2,395
three or more flats ²⁵	quantity	3,211	1,354	3,353
Total of completed flats	quantity	74,366	33,137	64,013
of which flats with 1 or 2 rooms	quantity	6,035	3,979	16,743
3 or 4 rooms	quantity	24,062	9,987	23,691
5 rooms or more	quantity	44,269	19,171	23,579
Total of residential buildings on 31 December ²⁶	quantity	2,687,868	2,934,602	3,112,961
Total of flats on 31 December ²⁷	quantity	5,577,859	6,027,400	6,549,811
of which flats with 1 or 2 rooms	quantity	527,518	562,588	911,351
3 or 4 rooms	quantity	2,484,597	2,616,670	2,694,417
5 rooms or more	quantity	2,565,744	2,848,142	2,944,043

25 Including dormitories.

26 2020 including dormitories.

27 2020 including flats indormitories.

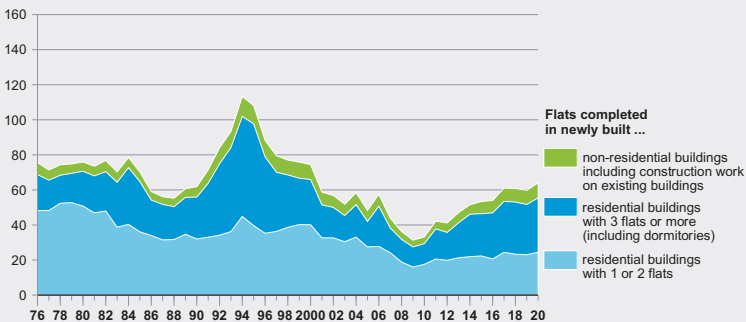
Building permits for dwellings* in administrative districts 2020 per 1,000 inhabitants**



* Including flats under the permit exemption procedure.

** Residents as of December 31, 2020, based on the 2011 census.

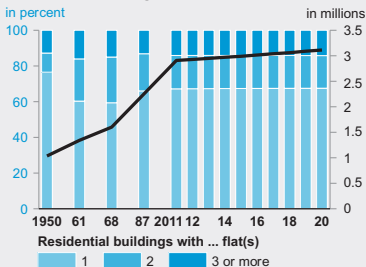
Flats* completed since 1976 in thousands



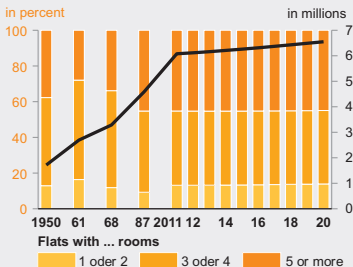
* Including flats under the permit exemption procedure.

Total* of residential buildings and dwellings since 1950

Residential buildings



Flats



* Results of the census of buildings and housing of 1950, 1961, 1968 and 25 May 1987; from 2011 updating of the inventory on the basis of the final results of the 2011 census of buildings and housing.

Trade and hospitality	Unit	2000	2010	2020
Foreign trade (preliminary results for 2020)				
Total exports ²⁸	mill. €	92,878	144,011	168,227
of which goods of the food industry	mill. €	4,712	7,044	9,313
goods of the business economy	mill. €	88,166	135,008	155,410
of which raw materials	mill. €	714	904	792
semi-finished goods	mill. €	3,245	6,307	6,614
finished goods	mill. €	84,207	127,798	148,004
of which Europe	mill. €	64,010	94,268	109,819
including EU countries ²⁹	mill. €	48,709	81,603	85,924
Africa	mill. €	1,531	2,817	2,310
America	mill. €	15,517	18,474	22,196
Asia	mill. €	11,070	26,988	32,463
Australia and Oceania	mill. €	718	1,437	1,427
miscellaneous ³⁰	mill. €	•	27	11
Total imports ²⁸	mill. €	85,034	129,429	179,914
of which goods of the food industry	mill. €	4,366	7,096	10,289
goods of the business economy	mill. €	80,668	117,070	159,575
of which raw materials	mill. €	5,056	14,677	8,792
semi-finished goods	mill. €	5,397	5,474	6,022
finished goods	mill. €	70,216	96,919	144,761
of which Europe	mill. €	55,229	86,021	124,892
including EU countries ²⁹	mill. €	36,765	72,393	104,663
Afrika	mill. €	3,341	3,886	3,492
America	mill. €	9,695	10,540	14,005
Asia	mill. €	16,642	28,764	37,200
Australia and Oceania	mill. €	118	219	165
miscellaneous ³⁰	mill. €	•	0	158
Tourism³¹				
Beds available in tourist accommodation	quantity	557,465	559,833	530,333
Guest arrivals	1,000	23,827	28,289	19,832
of which foreign guests	1,000	4,844	6,496	2,886
Overnight stays	1,000	78,178	77,877	59,962
of which foreign guests	1,000	10,167	13,472	7,051

28 Including returned goods, replacement deliveries etc.

29 Total number of EU member states at the time indicated: 2000: 15, 2010: 27, 2019: 27.

30 Ship and aircraft requirements, countries not identified, etc.

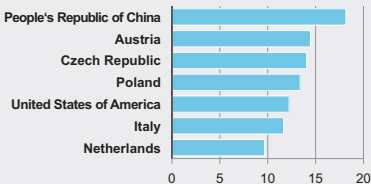
31 Subsequently results for tourist accommodation of 9 or more beds and for campsites of three or more pitches (from 2017: 10 or more beds or pitches) 1990 and 2000 campsites revised. Beds available as of 30 June (beds excluding campsites).

Imports and exports* 2020 by major countries

in billions of euros

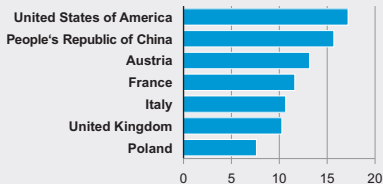
Import by country of origin

Share in total imports: 52.1 %



Export by countries of destination

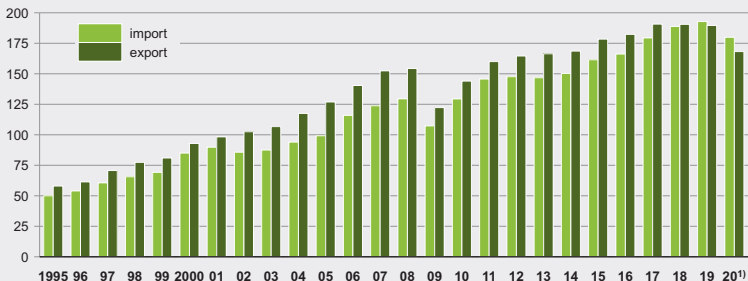
Share in total exports: 51.2 %



* Preliminary results.

External trade developments since 1995

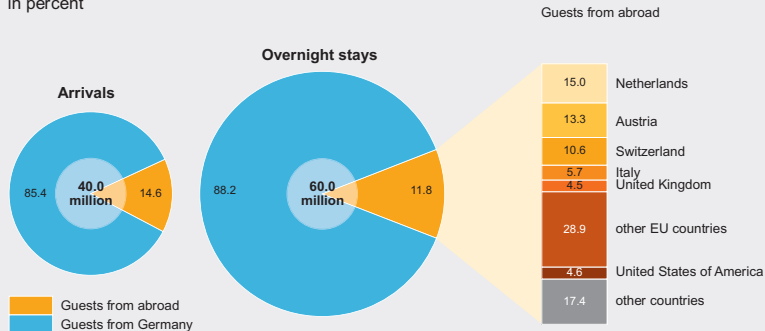
in billions of euros



¹⁾ Preliminary results.

Guest arrivals and overnight stays in tourist accommodation and campsites* 2020 by country of origin of guests

in percent



* Tourist accommodation of ten or more beds (including campsites of ten or more pitches).

Traffic	Unit	2000	2010	2020
Road Traffic				
Number of motor vehicles on 1 January ³²	1,000	8,516	8,630	10,463
including passenger cars and estate cars ³³	1,000	6,774	6,863	8,170
per 1,000 inhabitants	quantity	556	549	622
total motorbikes ³⁴	1,000	651	754	992
Registration of new motor vehicles	quantity	636,171	633,191	707,544
including passenger cars and estate cars ³³	quantity	531,331	544,668	579,065
Total of road accidents	quantity	336,139	356,866	345,411
of which material damage only	quantity	273,023	305,897	299,394
personal injury	quantity	63,116	50,969	46,017
fatalities	quantity	1,450	697	484
injured people	quantity	87,004	67,667	57,179

Air transport

Passengers (arrival and departure)	1,000	25,922	39,479	12,678
Volume of freight (from 2010 including mail)	t	143,801	294,525	155,148

Rail transport

Goods received	1,000 t	26,524	27,819	27,261
Goods dispatched	1,000 t	19,699	24,555	23,685

Inland waterway transport

Goods received	1,000 t	7,812	5,376	4,225
Goods dispatched	1,000 t	5,019	3,603	3,479

32 2020: status as of 1 January of the following year. From 2008 registered vehicles only; excluding temporary de-registrations.

33 Passenger cars and other "M1 vehicles".

34 Including light motorbikes.

Money and lending	Unit	2000	2010	2020
Savings at financial institutions on 31 December ³⁵	mill. €	104,112	122,601	108,734
at Building societies on 31 December	mill. €	19,230	27,420	15,112
Loans to non-bank financial institutions on 31 December ³⁵	mill. €	518,913	524,552	613,728
Business registrations³⁶				
Registrations	quantity	124,351	150,264	118,517
including newly founded companies ³⁷	quantity	94,523	122,834	94,368
Total of de-registrations	quantity	104,628	117,107	94,351
including complete liquidation	quantity	68,755	87,335	71,802
Total of business insolvencies	quantity	3,073	3,837	2,172

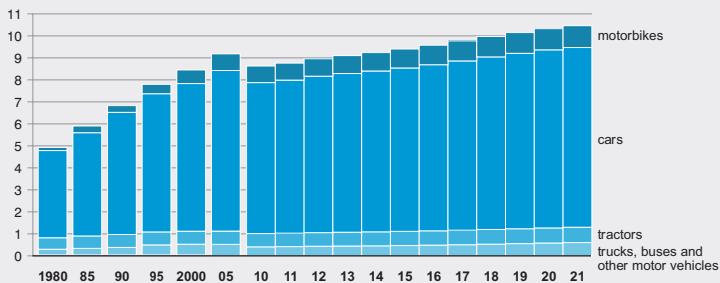
35 All branches of Deutsche Bundesbank operating in Bavaria, excluding Postbank and Deutsche Bundesbank. From 1999 excluding trust loans and loans to building societies but including loans of building societies and non-bank financial institutions.

36 Excluding vending machine operators and travel industry.

37 Up to and including 2002 new company formations including mergers or divisions.

Number of motor vehicles* since 1980

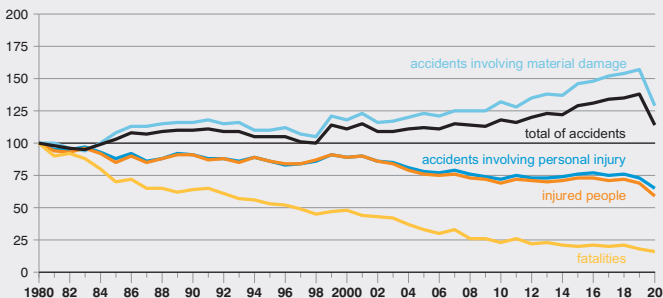
in millions



* From 2008 registered vehicles only; excluding temporary de-registrations.

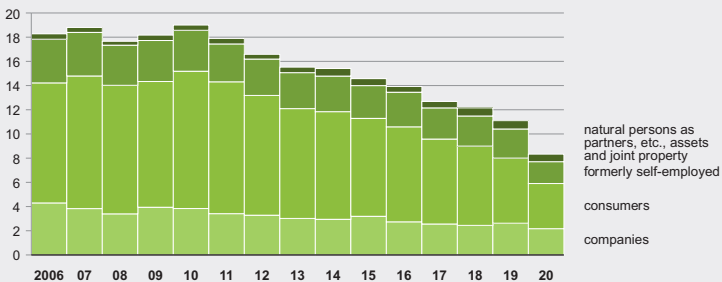
Number of road accidents since 1980

1980 = 100



Insolvency proceedings initiated* 2006 to 2020

in thousands



* Data for formerly self-employed people available since 2002 only.

Social services		Unit	2000	2010	2020
Public health insurance					
Total of members		1,000	7,261	7,603	8,730
including compulsory members		1,000	4,212	4,520	5,289
voluntary members		1,000	1,021	762	1,082
Pension insurance fund³⁸					
Total of pensions ³⁹		1,000	1,851	3,287	3,448
of which old-age pensions		1,000	1,203	2,352	2,511
Average pension payment per month at standard retirement age male		€	721	1,007	1,265
female		€	306	515	766
Unemployment insurance scheme and benefits⁴⁰					
Recipients of Arbeitslosengeld (annual average)	quantity		187,216	152,624	160,795
Arbeitslosengeld II in December	quantity		79,700	463,471	418,355
Expenditure on Arbeitslosengeld	1,000 €		2,793,202	2,383,225	3,329,543
Arbeitslosenhilfe/-geld ⁴¹	1,000 €		718,059	1,174,172	1,339,345
Social welfare					
Total of beneficiaries of supplementary welfare allowance not living in institutions on 31 December ⁴²	quantity		210,570	9,271	...
per 1,000 inhabitants	quantity		17.0	0.7	...
Total gross expenditure ⁴³	mill. €		2,705	3,481	...
including supplementary welfare allowance	mill. €		818	138	...
Total of expenditure per inhabitant only ⁴³	€		188	241	...
Total of housing benefits⁴⁴					
Total of beneficiaries on 31 December ⁴⁵	quantity		97,601	82,274	...
of which recipients of rent subsidy	quantity		91,223	76,444	...
Day childcare on 1 March					
(2000: early years childcare (Kindergarten) only	places	quantity	368,504	501,565	663,264
	children in care	quantity	368,422	461,177	599,803
Child and youth welfare					
Expenses from public funds		1,000 €	1,458,541	3,833,885	...

38 Results from 2003 are based on amendments to the Pension Reform Act, which entered into force on 1 January 1992.

39 At the end of each year.

40 From 2019 data after revision.

41 Unemployment assistance/benefits. Unemployment assistance was replaced by basic security benefits for job seekers in 2005. Only figures recorded by the Federal Agency are shown.

42 Reference date for figures from reformed social assistance statistics (since 1994); due to legal changes as of January 2005 a comparison with previous years is only possible to a limited extent.

43 Excluding benefits for asylum seekers and tolerated persons. From 2017 without data according to Chapter 4 SGB XII (basic income support in old age and in case of reduced earning capacity).

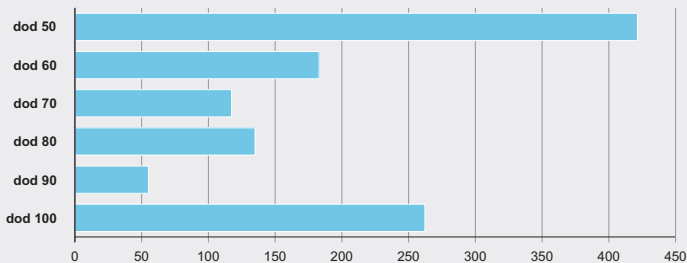
44 From 2005 only households receiving housing benefits are shown.

45 Including payments in arrears.

Severely disabled people on 31 December 2019

by degree of disability (dod)

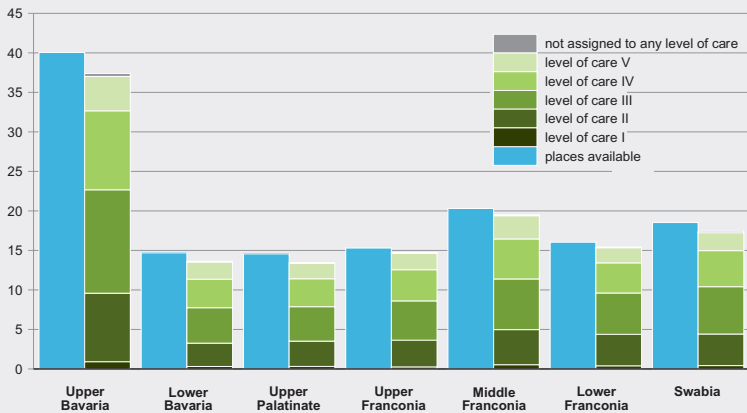
in thousands



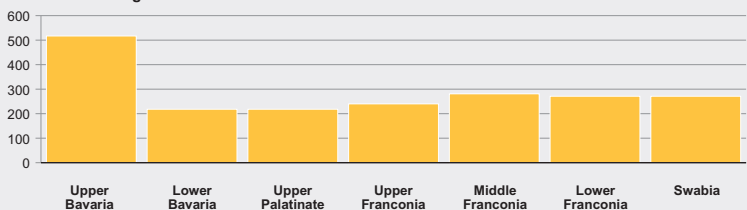
Places available and people in need of care in nursing homes on 15 December 2019

by administrative districts and levels of care

in thousands



Number of nursing homes



Public finances	Unit	2000	2010	2020
Total of government expenditure ⁴⁶	mill. €	49,202	70,818	107,165
of which state of Bavaria expenditure	mill. €	32,410	45,348	72,516
of local councils/ALC	mill. €	23,015	34,256	53,363
Total of tax revenue of public budgets	mill. €	72,294	•	•
of which federal revenue	mill. €	36,339	•	•
of the state of Bavaria	mill. €	26,628	31,091	44,150
of local councils/ALC	mill. €	9,327	12,196	19,422
Total public debt ⁴⁷	mill. €	39,211	49,644	35,702
of which state of Bavaria debt	mill. €	20,303	30,588	18,510
of local councils/ALC	mill. €	17,241	18,275	16,047
Full-time federal ⁴⁸ staff ⁴⁹	quantity	58,803	44,178	35,275
state of Bavaria	quantity	225,022	194,055	206,230
local councils/ALC ⁴⁶	quantity	170,465	118,597	137,210

46 Excluding associations performing communal tasks.

47 Including associations performing communal tasks; from 2000 excluding legally independent hospitals.

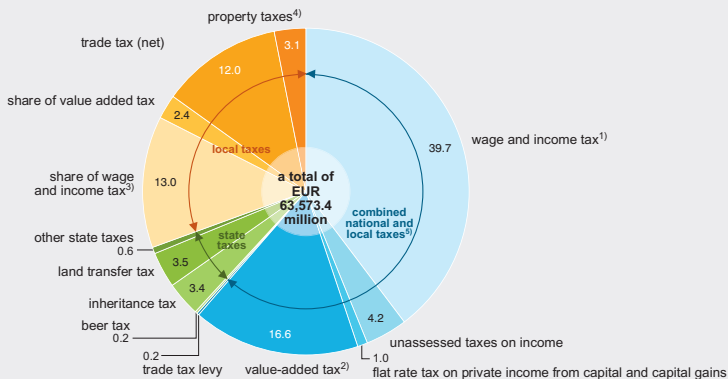
48 2020: figures rounded to 5.

49 From 2018: including public bodies and institutions (excluding the Federal Employment Agency and social security institutions).

Wages and salaries (earnings)	Unit	2000	2010	2020
Manufacturing industry, service sector				
Average gross hourly earnings ⁵⁰				
of full-time employees in total	€	•	19.83	25.32
male	€	•	21.03	26.54
female	€	•	16.73	22.31
Average gross monthly earnings ⁵⁰				
of full-time employees in total	€	•	3,340	4,162
male	€	•	3,547	4,369
female	€	•	2,809	3,652

50 Excluding bonuses.

Tax revenue of state and local councils 2020 as a percentage of total tax revenue



1) Including corporate income tax.

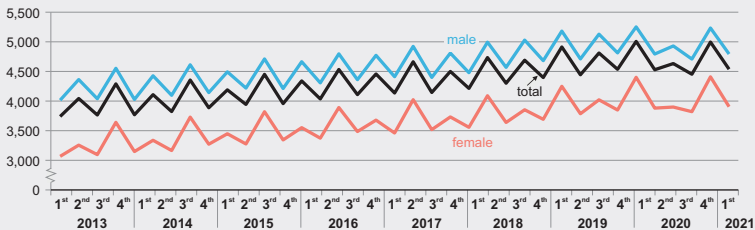
2) Including import turnover tax.

3) Including flat rate tax on private income from capital and capital gains.

4) Including other local taxes.

5) The tax revenue of the state of Bavaria as well as the combined national and local taxes were taken from a report of the Bavarian State Ministry of Finance and Regional Identity.

Average gross monthly earnings* of full-time employees since 1st quarter of 2013 in Euro



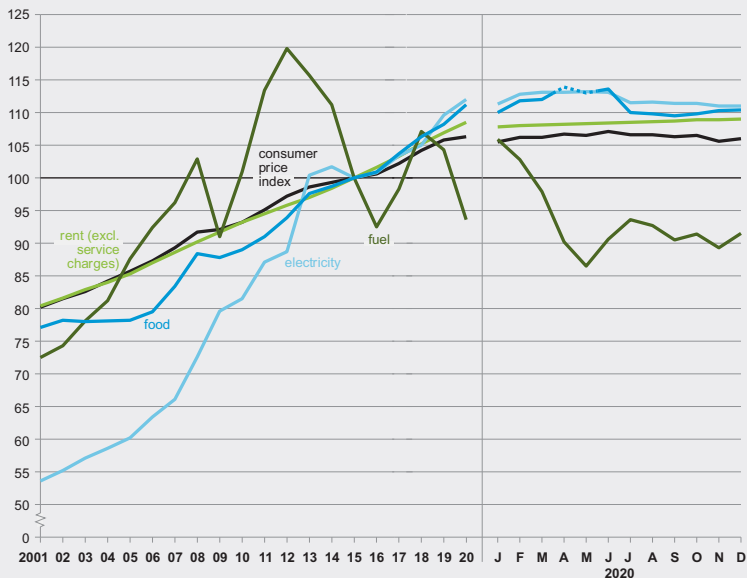
* Including bonuses (e.g. Christmas bonus, additional holiday pay).

Prices	Unit	2000	2010	2020
Consumer price index for Bavaria (2015 = 100)	%	78.6	93.2	106.3
of which food and non-alcoholic beverages	%	74.6	89.4	110.5
rent (excl. service charges)	%	80.4	93.8	108.4
domestic fuel oil	%	68.5	111.1	86.2
fuel	%	71.9	100.9	93.6
Price index for buildings (2015 = 100)				
residential buildings	%	77.3	89.5	117.0
office buildings	%	76.0	89.7	116.7
Total purchase values for building land per m ²	€	100.44	128.49	249.22
of which land ready for development	€	138.56	223.39	348.76

Consumer price index since 2001

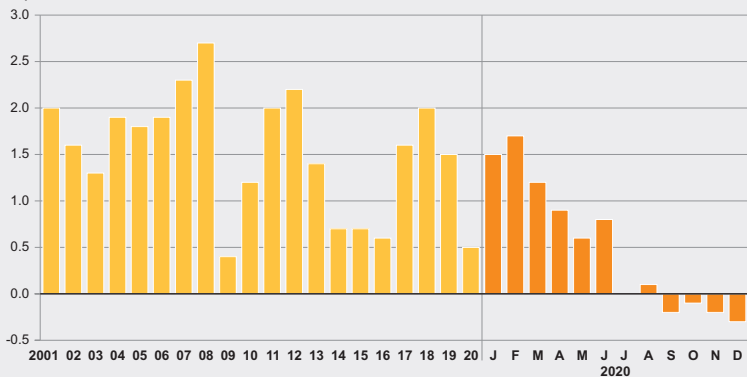
Development by selected product groups

2015 = 100



Changes relative to previous year or month of previous year

in percent

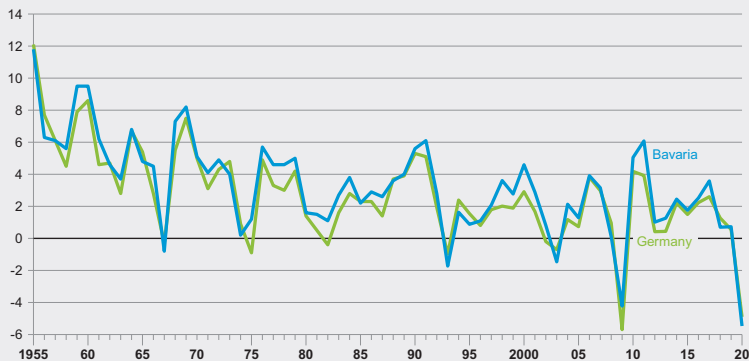


National accounts ⁵¹	Unit	2000	2010	2020
Gross domestic product at market prices	mill. €	357,900	452,128	610,217
Gross value added at basic prices	mill. €	322,726	406,514	551,920
of which ⁵² agriculture, forestry, fisheries	%	1.3	0.9	0.8
manufacturing industry	%	31.7	32.6	31.7
Service sectors	%	67.0	66.5	67.6
trade, transport, hospitality; information and communication	%	20.1	19.1	20.3
financial, insurance and business services; real estate	%	27.9	28.1	27.6
public and other service providers, education and health	%	19.0	19.3	19.7

51 All figures in current prices.

52 Share of total gross value added at basic prices in percent.

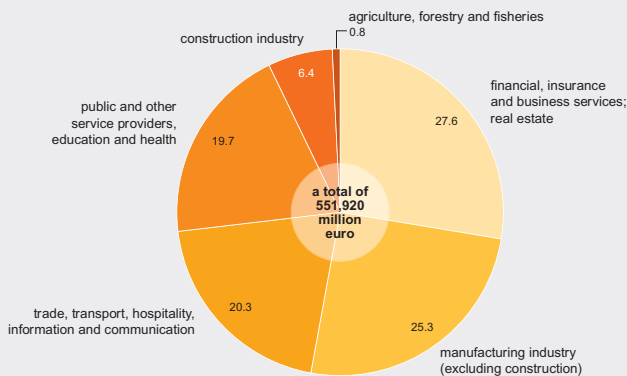
Growth rates of real gross domestic product in Bavaria and Germany since 1955* in percent



* The results from 1955 to 1970, 1971 to 1991 and 1992 to 2019 are not fully comparable due to differences in conception and definition. 1955 to 1970 in 1991 prices, since 1971 in prices of the previous year as a chain index.

Economic structure in 2020

Share of value added by economic sectors
in percent



**Federal Republic of Germany
including federal states and seats of government**



